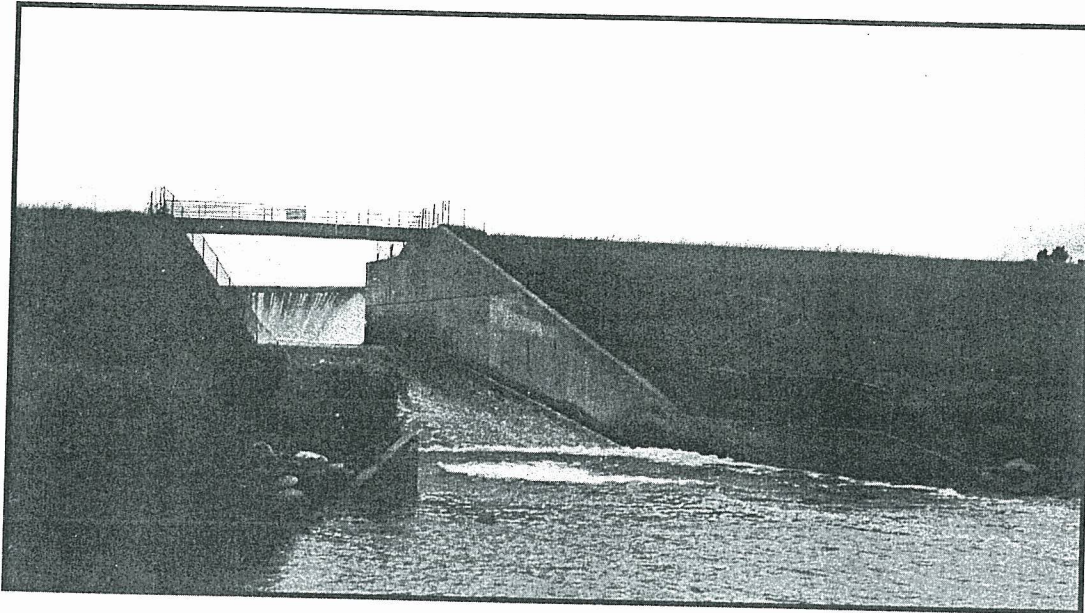


LAKE ISABELLA DAM INSPECTION

Dam Identification No.: 434
Hazard Potential: High
Section 35, T. 15 N. – R.6 W
Sherman Township, Isabella County, Michigan
Chippewa River




Per Part 315, Act 451 of 1994
PREPARED FOR:

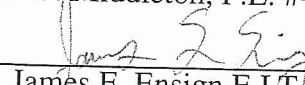
*Isabella County Drain Commissioner
Rick Jakubiec
200 N. Main Street
Mt. Pleasant, MI 48858
(989) 772-0911 ext. 247
rjakubiec@isabellacounty.org*

PREPARED BY:

Spicer Group, Inc.

INSPECTED BY:


Shawn P. Middleton, P.E. #42722


James E. Ensign E.I.T.

Date of Inspection: July 23, 2010
Date of Report: November 30, 2010

Project I.D. Number 118623SG2010

Spicer
group

TABLE OF CONTENTS

Introduction.....	2
Conclusions and Recommendations	3
<i>Overall Condition</i>	3
<i>Observed Deficiencies and Recommendations</i>	3
<i>Further Detailed Studies and/or Investigations</i>	3
<i>Hazard Potential Classification</i>	4
Project Information	4
<i>General Description of Dam</i>	4
<i>Purpose of Dam</i>	5
<i>Available Design, Construction and Maintenance Information</i>	5
<i>Previous Inspection Reports</i>	5
Field Inspection.....	5
Structural Stability	7
Hydrology and Hydraulics	7
<i>Available Design Data and Hydrologic Design Data</i>	7
<i>Contributing Drainage Area</i>	7
<i>Design Flood Volume Determination</i>	7
<i>Existing Spillway Capacity</i>	8
<i>Routing of Spillway Design Flood</i>	8
<i>Flood of Record</i>	8
Operation and Maintenance	8
Emergency Action Plan.....	9
Appendix A	
<i>Dam Inspection Worksheet and Checklist</i>	
<i>MDEQ Inventory of Dam</i>	
<i>MDEQ Hydrologic Information</i>	
Appendix B	
<i>Site Location Map</i>	
Appendix C	
<i>Previous Inspection Reports</i>	
<i>Updated Notification Call List</i>	
<i>2008 Letter From SGI</i>	
Appendix D	
<i>Photographs</i>	
Appendix E	
<i>Spillway Rating Curve</i>	