

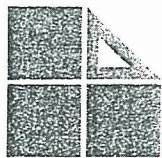
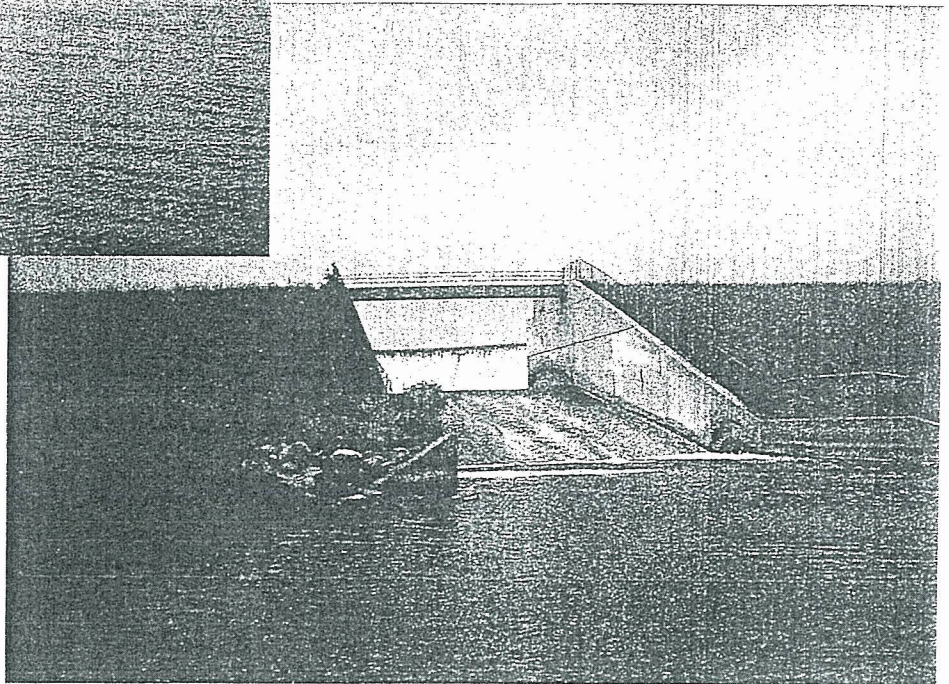
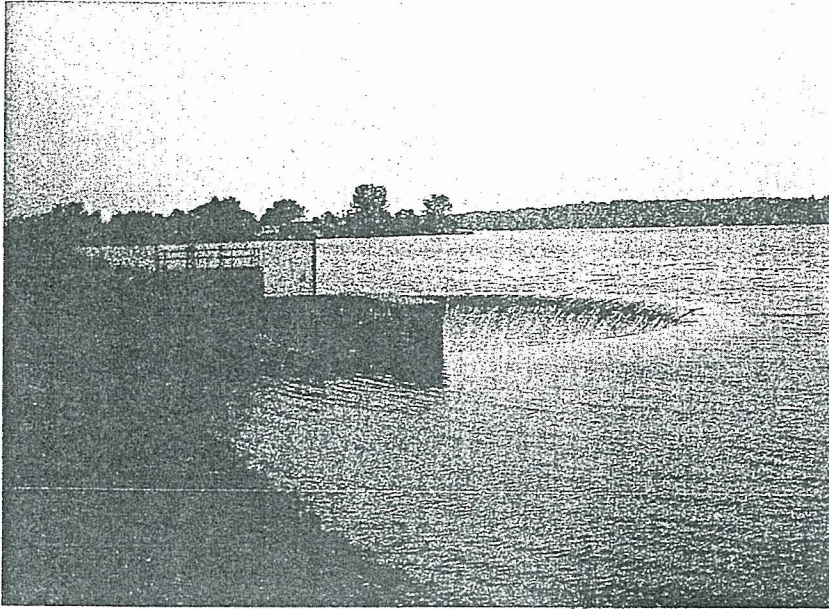
# LAKE ISABELLA DAM SAFETY INSPECTION REPORT

---

Dam ID#: 00434 - High Hazard Potential  
Section 35, T.15N, R6W  
Sherman Township  
Isabella County

Project E070246

November 6, 2007



**LAPHAM**  
ASSOCIATES

ENGINEERING  
PLANNING  
ENVIRONMENTAL  
SURVEYING

515 E FIFTH ST  
P O B O X 33  
CLARE MI 48617  
P 989 386 7774  
F 989 386 7152

115 S ARCADE ST  
GLADWIN MI 48624  
P 989 426 4881  
F 989 426 0422

210 COURT ST SUITE A  
MT PLEASANT MI 48858  
P 989 772 2865  
F 989 772 3528

NORSTAR CENTER  
116 S THIRD ST  
WEST BRANCH MI 48661  
P 989 345 5010  
F 989 345 7302